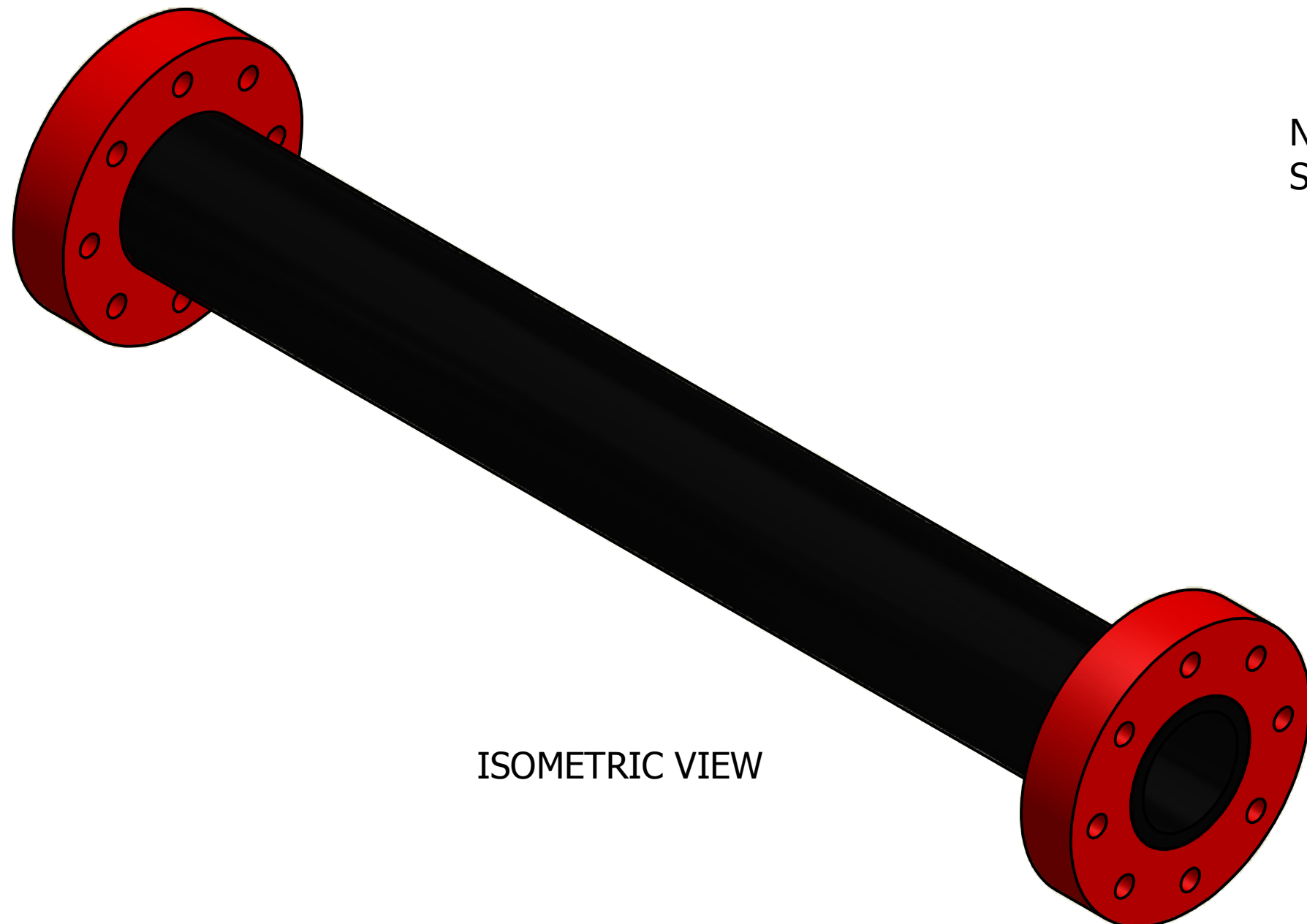
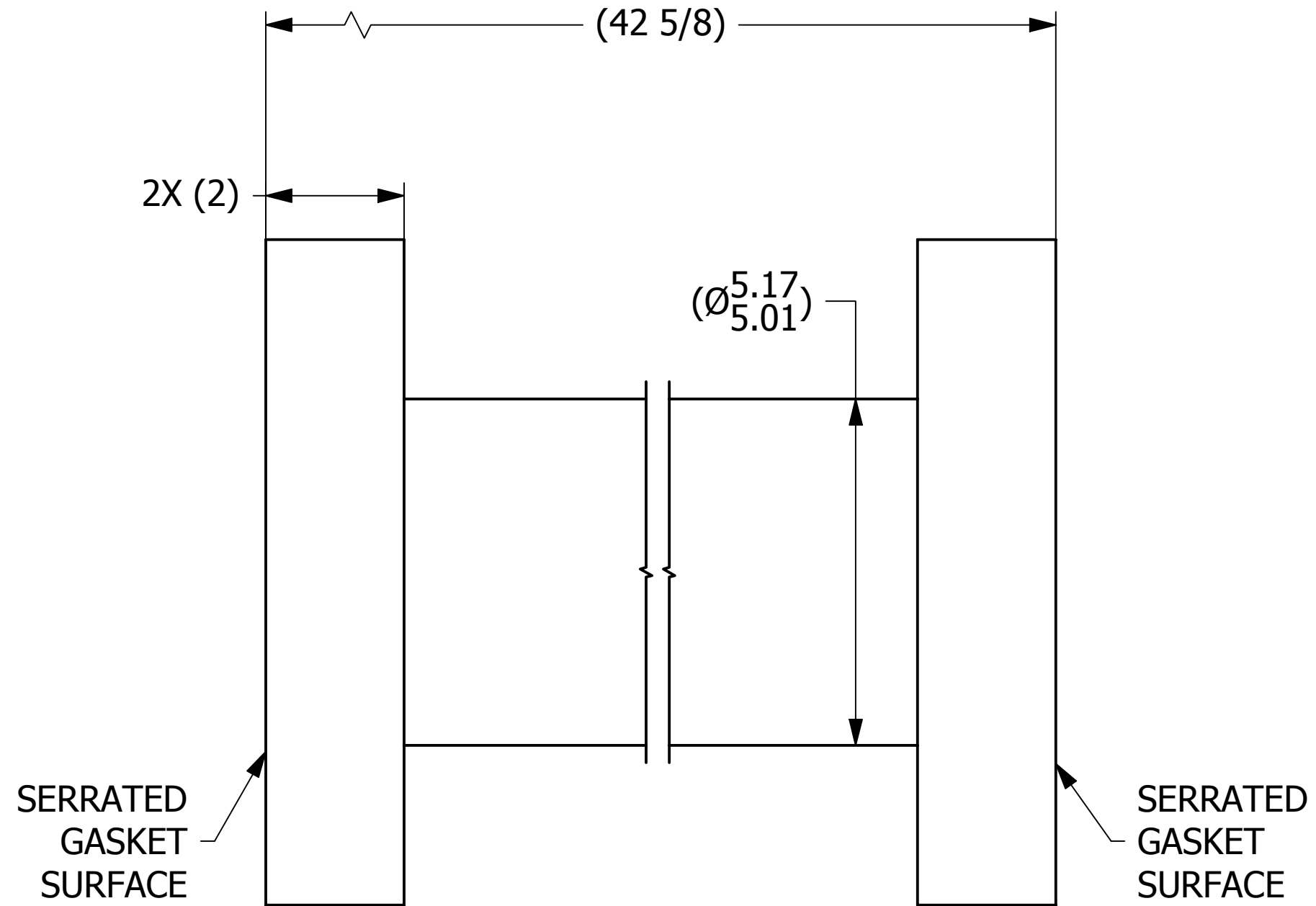
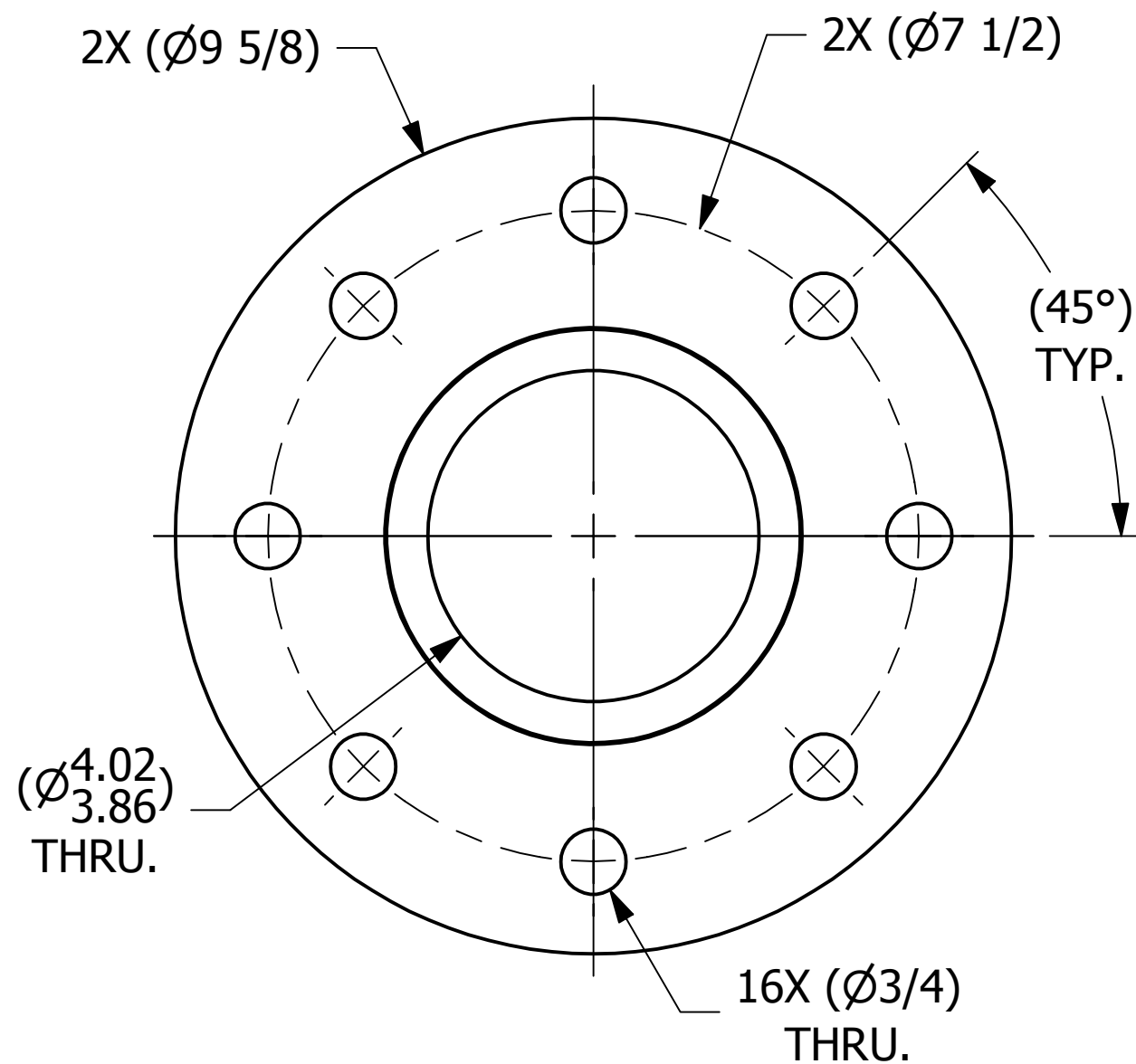


SALES DRAWING SALES DRAWING

SALES DRAWING SALES DRAWING



NOTE:
SOLD TO WORLEY WELDING ONLY.

| | | | | |
|--|-----|---------|---|--------|
| C | TAK | 8-30-17 | ADDED DSS 3 NOTE, REPLACED QAP5F-1 W/ QAP5A-1 | |
| B | GDS | 7-27-11 | ADDED MARKING PRESSURE NOTE | |
| A | REH | 9-29-10 | ADDED PART TO SYSTEM | |
| REV | BY | DATE | DESCRIPTION | |
| <div><div><div></div><div>SALCO PRODUCTS, INC.</div></div></div> | | | | |
| PART NAME: PIPE SPOOL 4" | | | | |
| MATERIAL: SALCO PE | | | | |
| PROJECT #: | | WAG0870 | SHEET #: | 1 OF 1 |
| | | | SCALE: | 1:2 |
| DRAWING #: | | C29386 | PART #: | |
| | | | HS4PS4543BK | |

| | | |
|--|-----------------------------|-----------|
| UNLESS OTHERWISE SPECIFIED DIMENSIONAL TOLERANCES FRACTIONAL: ±1/16 X.XX: ±.03 X.XXX: ±.015 ANGLE: ±1° DEBURR ALL SHARP EDGES. ALL MACHINED SURFACES TO HAVE A 125 RMS FINISH UNLESS NOTED OTHERWISE. | DRAWN BY: | REH |
| | CHECKED BY: | VD |
| | PROTOTYPE BY: | REH |
| | PROTOTYPE DATE: | 9/3/2010 |
| | APPROVED FOR PRODUCTION BY: | VD |
| | PRODUCTION DATE: | 9/29/2010 |
| THIRD ANGLE PROJECTION | | |

THIS PRINT, PROPERTY OF SALCO PRODUCTS INC., CONTAINS PROPRIETARY INFORMATION AND MUST NOT BE COPIED, REPRODUCED, OR USED DETRIMENTALLY TO OUR INTEREST.